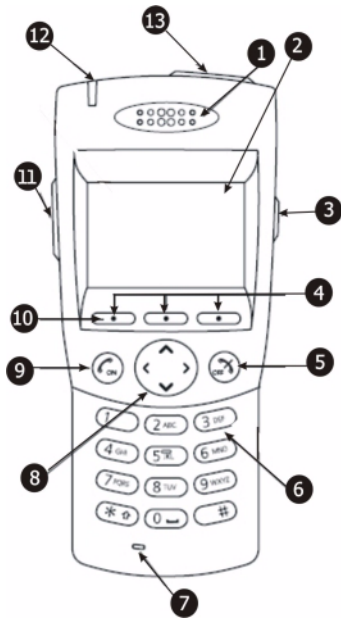


MITEL

# 5606 Wireless Handset



- 1 Loudspeaker
- 2 Display
- 3 Mute Button
- 4 Soft Keys
- 5 OFF Button
- 6 Alphanumeric Keys
- 7 Microphone
- 8 Navigation Key
- 9 ON Button
- 10 Menu Soft key
- 11 Volume Up/Down Button
- 12 LED
- 13 Alarm Button (optional)

### Display Icons

	Off hook (call in progress)		Digit input mode
	Audio signals off		Phonebook
	Battery		Locked keypad
	Loudspeaker on/off		Unanswered call
	Headset connected		Incoming/Outgoing call
	New message		Unread/Read message
	Text input mode (capitals)		No movement/Man-down alarm
	Text input mode (lower case)		



### Turning the Handset On/Off

To turn on:

1. Press and hold the **ON** button. "Switch on?" is displayed.
2. Press **Yes** within 10 seconds.

To turn off:

1. Press and hold the **OFF** button.
2. Select **Yes** and press **OK**.

### Making a Call

- Dial the number and then press the **ON** button. The name of the called party is displayed if available.

OR

- Press the **Navigation Key** down arrow to open the call list and use the **Navigation key** to scroll the list of your last twenty calls. Press the **ON** button to dial.

OR

1. In the **Contacts** menu, select **Central Phonebook** and then press the **Right navigation key**.
2. Select the name to call from the list and then press the **ON** button.

OR

- Press a pre-programmed hot key. For information about programming Hot keys, see the *Mitel 5606 Wireless Handset User Guide*.

### Answering a Call

- Press the **ON** button or the **Accept** softkey to answer a call in normal mode.

OR

- Press the **Volume Up** button or the **middle softkey** to answer in speaker mode.

### Ending a Call

- Press the **OFF** button to end a call.

### Placing a call on Hold

- Press the **R** softkey to place a call on Hold. After 30 seconds, "Hung Up" is displayed and a busy tone sounds.
- Press the **R** softkey again to retrieve the call.

### Transferring a Call

1. Press the **R** softkey to put the call on hold.
2. Dial the number to which you want to transfer the call.
3. Press the **On** button to transfer the call.

**Note:** Supervised transfer feature is system-dependent.

### Adjusting Volume Levels

#### To adjust earpiece volume

- Press **Volume Up/Down** button to increase/decrease volume during a call.

#### To change ringer volume:

- In the **Settings** menu, highlight **Alert Signals**.
- Select **Ring Signals** and press **>**.
- Select a call type and a volume level.
- Press **Select** to activate your choice.

#### To turn Loudspeaker on/off:

- Press the **middle softkey** before or during a call.

#### To turn Mute on/off during a call:

- Press the **Mute** button. "Muted" is displayed.

#### To turn ring signal on/off in standby mode:

- Long press the **Mute** button to toggle ring signal on/off. The "Audio Signals Off" icon appears.

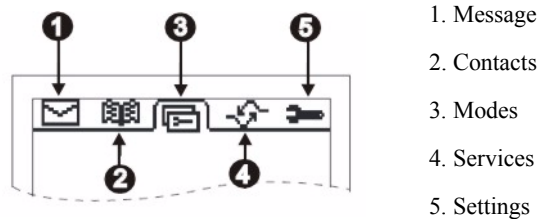
**Locking the keypad:**

- Press the \* key and then within four seconds, press the left sofkey to lock/unlock keypad. The locked keypad icon indicates a locked keypad.

**Charging the battery:**

Place the handset in the desktop charger. The Battery icon indicates charge level. The handset is fully functional while in the charger.

**Navigating the Menu**



<b>To perform this task...</b>	<b>Press this key</b>
Enter the menu	Menu softkey
Choose a menu tab	Left/Right navigation keys
Open a menu tab	Right navigation key
Move through a list	Up/Down navigation key
Expand a selection	Right navigation key
Select an item	Press the ON button
Exit a menu	Press the OFF button

**Menu Structure**

**On hook/Standby Menu**



<b>Messages</b>	Message List
	Send SMS
<b>Contacts</b>	Local Phonebook
	Central Phonebook
	Call List
<b>Modes</b>	Normal
	In Charger
	Modes 2 - 9
	Switch Off
<b>Services</b>	Services 1 -10
<b>Settings</b>	Alert Signals
	Alarm Settings
	Soft key
	Hot key
	General
	System

**Note:** Menu items are dependent upon system programming.

